

# Tina Brocklebank

make-up artist

## Brushes

I have worked as a professional make-up artist for over 30 years in TV, editorial, commercial and theatre after being trained and graduated from the London college of Fashion.

For the past 20+ years I have ran my own successful business from my countryside, Lincolnshire make-up studio, specialising in make-up lessons and special occasion make-up. My work has taken me all over the U.K.



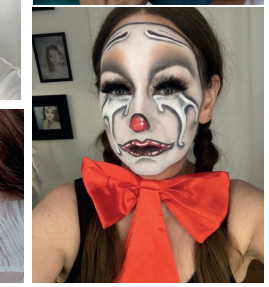
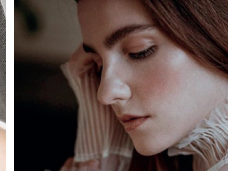
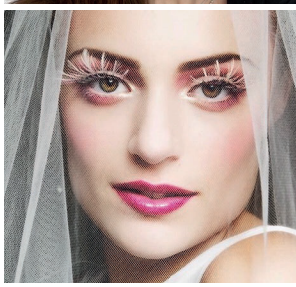
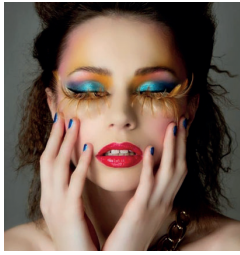
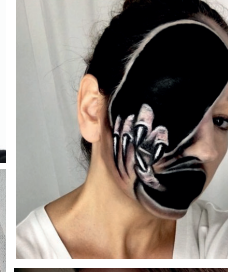
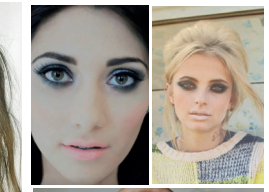
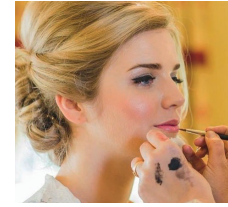
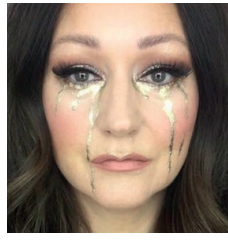
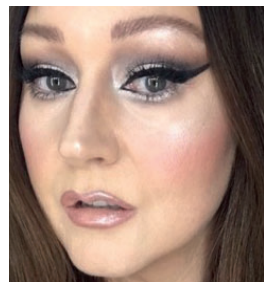
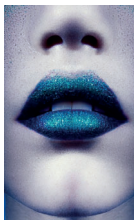
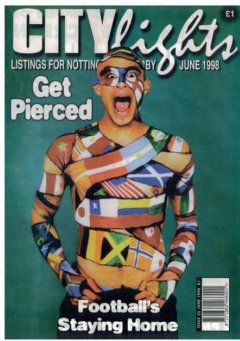
I love my work and I know how important great make-up brushes are in creating the highest standard of make-up, with ease and precision.

I meet so many people who want to learn how to apply make-up quickly and simply, so I created my first brush collection in 2020. They are available via my online store, [www.tinabrocklebank.co.uk/online-store](http://www.tinabrocklebank.co.uk/online-store)

The brushes are high quality, hand made and assembled in the U.K. using traditional methods, with the handles being made from birch or beech from managed forests and the brush heads from top-quality vegan hair. Each brush is used and selected exclusively by me.

I hope you enjoy using the brushes as much as I do!

Tina  
X



All makeup and body paintings by Tina Brocklebank Make-up artist